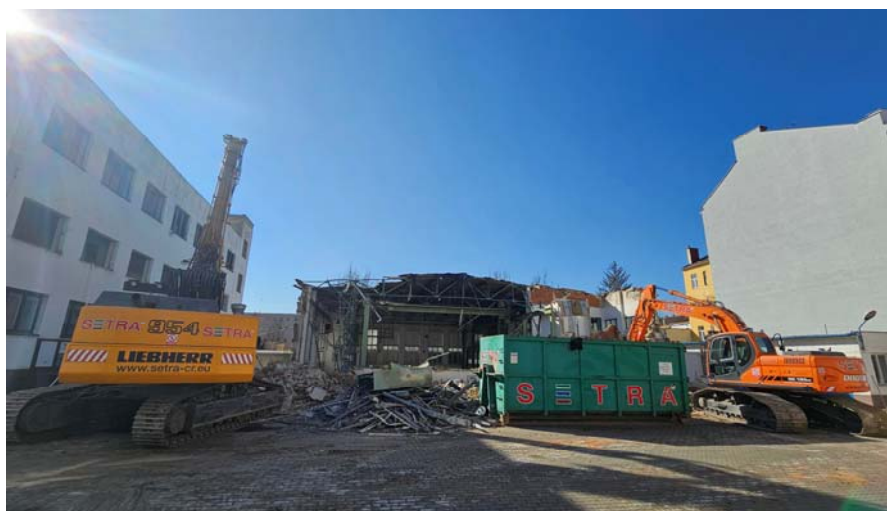




UDI Group has begun the demolition of industrial buildings on Svitavské nábřeží in Brno. In their place, it will build the Urban Park housing project

Prague, March 13, 2025 – The demolition of industrial buildings on Svitavské nábřeží in Brno started at the beginning of March. In their place, the international developer UDI Group will build the Urban Park residential project. In total, more than 1,100 units for owner-occupied or rental housing with civic amenities will be created. The demolition will be followed by the construction of the first phase south of Mostecká Street with 236 apartments. Its author is the Hlaváček & Partner studio.



"We have already issued a building permit for the first phase. We are currently selecting the general contractor for the construction together with the company K4. We have also recently chosen the company Real Spektrum, which will ensure sales in Brno," explained Jakub Malý, director of UDI Group for the Czech Republic. The first stage

will create a set of 236 units with facilities including a café and a number of spaces for shops and services that residents of similar housing complexes require, such as a laundry room, fitness center, etc. The goal is to revitalize the location and offer what is currently missing in the area. Smaller one-room units





will predominate, but the project also includes larger apartments. The construction of the first stage should be completed in 2027.

In the next phase, the new zoning plan of the city of Brno allows for the construction of apartments, which are currently being designed by the lokal Arch.Design studio. The studio won the architectural competition. In the future, almost 900 apartments will be built on the part of the land north of Mostecká Street. A supermarket is also planned. The developer estimates the total investment in the Urban Park project at 134 million euros.



"As for the surroundings, we are discussing the possibilities of modifying the embankment as part of the prepared flood control measures and our contribution to making the embankment, which is directly adjacent to our project, more attractive. We would also like to

participate in the modernization of the park at the depot of the transport company in the vicinity of the project," added UDI Group Strategy Director Marcela Fialková. The construction will open Mostecká Street, which is currently part of a closed industrial area, to the public, thus enabling passage to the embankment, which people use for walks and sports. The modernization of this neglected corner of the city will in itself contribute to improving the quality of this part of the embankment. In addition, it will move the production area from an otherwise residential area close to the city center.

The project includes an underground parking lot with a capacity that significantly exceeds the number required by law. In similar projects located near the city center and on public transport, people do not use cars as often as in classic housing on the outskirts of the city. The number of underground parking spaces will certainly be sufficient for the projected needs.